


Sadler's Wells
Cleaner (16 hours)

SADL
ERSW
ELLS

Sadler's Wells
Cleaner
(16 hours per week)



Contents

About us 3

Our Values..... 4

The Department..... 5

The Role 5

What are my responsibilities? 6

Who should apply? 7

Why work for us? 8

About us

Sadler's Wells is a world-leading creative organisation, dedicated to presenting, producing and touring dance made today in all its forms. Sadler's Wells commissions, presents and produces more dance than any other theatre in the world – from tango to hip hop, ballet to flamenco, Bollywood to cutting-edge contemporary dance. With an innovative, year-round programme of performances and learning activities, this is the place where artists come together to create dance, and where we welcome everyone to experience dance and be inspired.

Our aim is to reflect and respond to the world through dance: enabling artists of all backgrounds to create dance that moves us and opens our minds; sharing those experiences with the widest possible audiences to enrich their lives and deepen their understanding of what it means to be human.

More than half a million people come to our theatres in London each year, with many more enjoying our touring productions at partner venues across the UK and in cities around the world. Sadler's Wells Theatre has been located in Islington since the 17th century. Today Sadler's Wells consists of the Sadler's Wells Theatre (1,500 seats); the Lilian Baylis Studio (180 seats); three rehearsal studios; bars, a café, facilities for private and corporate entertaining and offices for Sadler's Wells' colleagues.

Our second theatre building and West End home, the Peacock (1,000 seats), is subject to a unique agreement whereby Sadler's Wells and the London School of Economics jointly manage it, with the LSE presenting its lectures to students during the day and Sadler's Wells presenting theatre at night.

Future Plans

Our fourth venue Sadler's Wells East will open in 2024 in east London's Queen Elizabeth Olympic Park. Sadler's Wells' new space will be located on the Stratford Waterfront site, opposite the London Aquatics Centre, alongside UAL's London College of Fashion and the V&A Museum. The site will form part of a new cultural and education district, which will also include a major new University College London (UCL) campus and have direct links to the creative communities already based in east London.

Sadler's Wells' new space will house a 550-seat mid-scale theatre, as well as facilities for a choreographic centre and a hip hop theatre academy, all planned to open in 2024 as well as facilities for the Rose Choreographic School and Academy Breakin' Convention.

Our Values

COLLABORATION



- We are encouraging and supportive
- We work as one collective team
- We listen and empower every voice
- We seek and value diversity of thought and experience
- We pool our knowledge, resources and creativity
- We create opportunities to work strategically and in partnership

EXCELLENCE



- We are ambitious and driven
- We make and share meaningful, exciting and impactful dance
- We do the best we can each day
- We continuously learn and develop our skills
- We operate sustainably by managing our resources effectively
- We hold each other accountable

INCLUSION



- We are brave and kind
- We create a safe place so colleagues can bring their full selves to work
- We celebrate and respect our differences
- We remove barriers to access or equality
- We actively address all forms of discrimination
- We engage and reflect the diverse communities we are part of

INNOVATION



- We are curious and bold
- We find a better way in the every day
- We challenge and question why, and why not
- We take creative and calculated risks
- We cultivate ideas, try new things and embrace change
- We learn and grow from our mistakes and successes

The Department

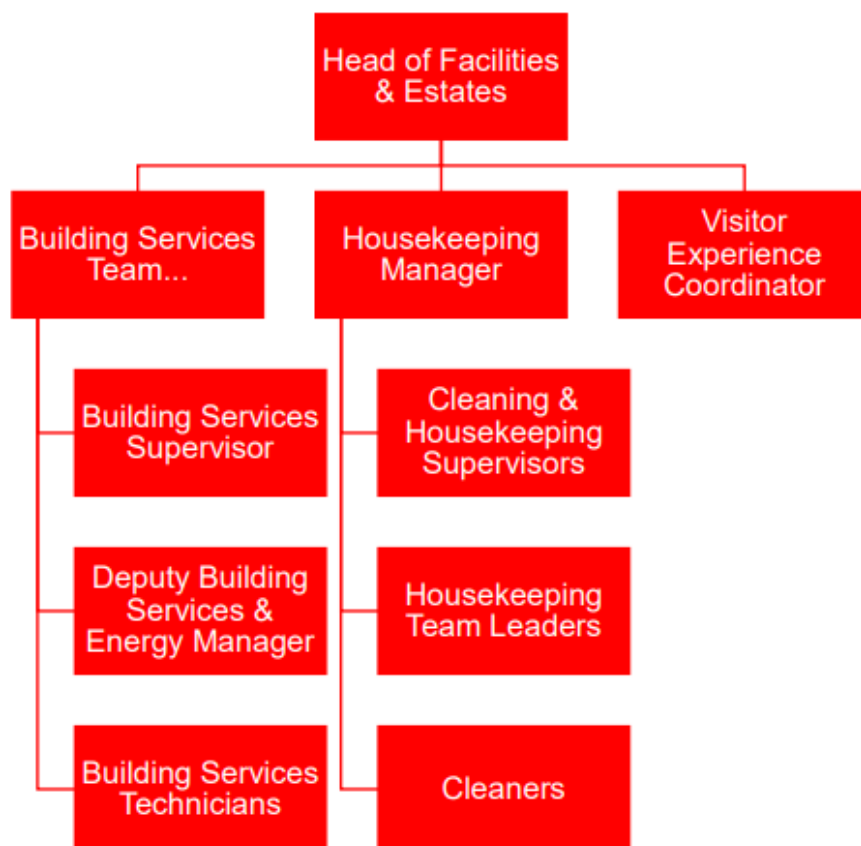
The Housekeeping team is part of the Visitor Experience Department. The purpose of the Visitor Experience Department is to create a consistent and exceptional visitor experience throughout our venues that reflects and enhances the organisation's vision.

The department is led by the Director of Operations and consists of Building Services, Cleaning and Housekeeping, Front of House and Stage Door and Security.

The Role

The principal responsibility of the Cleaner is to help ensure excellent standards of cleaning at all times. The post-holder will report to the Housekeeping Manager and will work as part of our team at Sadler's Wells and The Peacock theatre (part of Sadler's Wells). **Please note that this vacancy will work at Sadler's Wells in Angel with flexibility to work at the Peacock Theatre in Holborn.**

The Cleaner will be required to work a minimum of 16 hours per week over five days (this includes weekends and bank holidays). Shift patterns will be 7am – 10am over 4 days and 1 day, a shift from 7am to 11am.



What are my responsibilities?

Cleanliness and Operational Standards

- Undertake cleaning duties as required by the Housekeeping Manager, Housekeeping Supervisors and Team Leaders
- Restore facilities to agreed standards
- Work closely with other members of the building services team to ensure the premises and facilities are maintained in good working order
- Follow Sadler's Wells cleaning practices
- Dust, vacuum, empty bins, pick up litter and clean surfaces in the auditorium
- Sweep and mop floors
- Dust and clean tables, chairs, windows and mirrors and other surfaces
- Cleaning bathrooms
- Set up furniture for events
- Reporting of any maintenance issues to the Supervisors on a timely basis
- Inform the Supervisors and Team leaders of any shortage of cleaning materials

- Attend occasional staff meetings, training sessions and other events which may take place outside normal working hours
- Maximise income and minimise expenditure without loss of quality in all areas of responsibility.

General

- Live, breathe and role model our organisational values of Excellence, Collaboration, Inclusion and Innovation, being aware of the influence and impact you can have in Sadler's Wells
- Attend occasional staff meetings, training sessions and other events which may take place outside normal working hours
- Undertake other duties as may be reasonably required
- At all times to carry out duties and responsibilities with regard to Sadler's Wells' Equality, Diversity and Inclusion and Health and Safety Policies. This may include providing assistance with evacuation procedures or building searches in the event of an emergency at any of Sadler's Wells' premise

THIS JOB DESCRIPTION IS A GUIDE TO THE NATURE OF THE WORK REQUIRED OF THIS POSITION. IT IS NEITHER WHOLLY COMPREHENSIVE NOR RESTRICTIVE AND DOES NOT FORM PART OF THE CONTRACT OF EMPLOYMENT.

Who should apply?

The successful applicant will demonstrate the following skills, experience, and personal qualities:

Skills and Experience

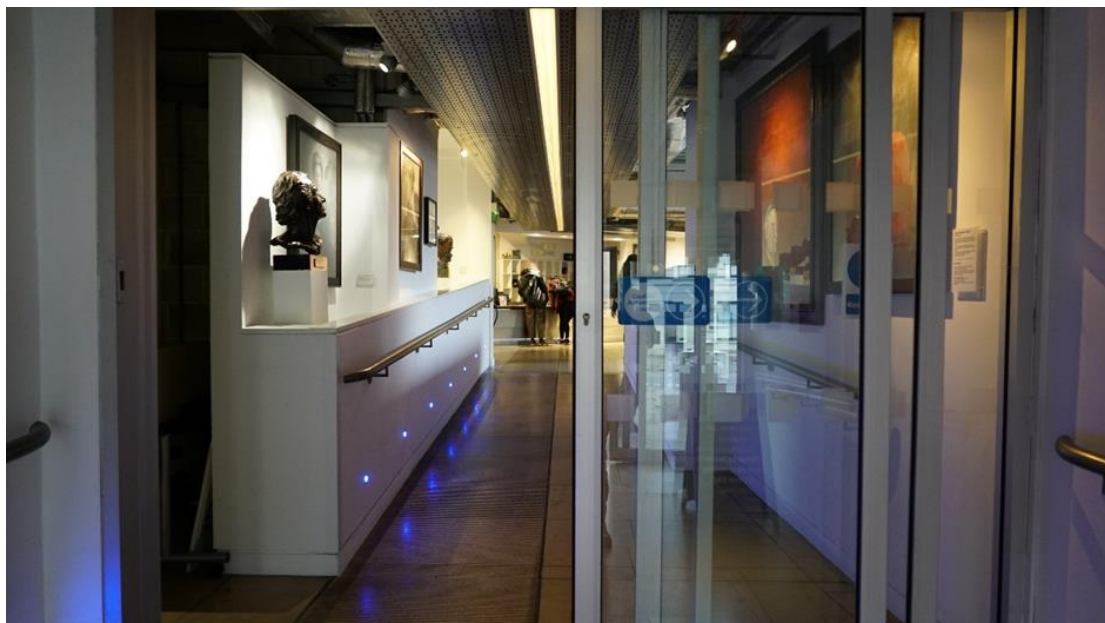
Essential

- Punctual and reliable
- A team player
- Attentive to detail
- You'll be able to clean to a high standard, whether in your own home or paid work.
- A willingness to learn
- Willingness to work across both of the Sadler's Wells venues (in Angel and Holborn)
- You'll have the right to work in the UK.

Additional, but not essential

- Experience of working as a cleaner
- Experience of window cleaning
- Experience and knowledge of COSHH and safe working practices
- Ability to work flexible hours according to the needs of the business

If you don't have everything listed here, but believe you have demonstrable experience to take into consideration, please apply. We are aware every applicant will have strengths and development areas to accommodate, and we are open to discussions around how we can support the postholder.



Why work for us?

You will be a key part of our mission to make and share dance that inspires us all and delivering our vision to create, through dance, a depth of connection beyond borders, cultures and languages, so we see ourselves in each other.

- You will be offered a salary of £10,940.80 per annum (£13.15 per hour) based on working 16 hours per week. You will have the chance to earn overtime.
- You will get 25 days annual leave per annum (pro rata), with an additional three days after five years' service
- You will be enrolled into the Sadler's Wells Trust Ltd. pension scheme
- You will have access to our Employee Assistance Programme (EAP) to support your wellbeing
- You will engage in learning and project opportunities to develop personally and professionally, and support your career journey
- You can access an interest-free Season Ticket Loan and a Cycle to Work salary sacrifice scheme
- You will be eligible for a death in service insurance policy covering twice your annual salary
- You will be encouraged to attend performances at both theatres with a discretionary allocation of tickets to employees (subject to availability), and a staff discount at the Garden Court Café
- We welcome everyone through our doors and encourage and enable people to be the best versions of themselves and to feel confident and capable in their roles
- We embrace a blend between home and office working, and we welcome a conversation about flexible working and your needs
- We celebrate diversity in the dance we share and showcase, and in our workplace. We are working hard to be more inclusive and increasing access both on stage and off and have a number of anti-racism commitments to make lasting changes in the way we work

Making an application

A Job Description and Person Specification are included in this document. If after reading you are still interested in applying, please find further details and information on how to apply [here](#).

If you would like support or have any queries regarding the format or submission of the application, please contact us on recruitment@sadlerswells.com.

We therefore welcome applications from people from all backgrounds who feel they align with our mission, vision and values. We are international and multicultural on our stages, and we want to reflect that in our organisation. By celebrating difference and incorporating diverse points of view and experiences, we can become closer to our artists, audiences and the communities we serve.

We are proud to be a Disability Confident employer meaning we have been certified by the government as actively taking steps to attract, recruit and retain disabled workers. We understand that some disabled colleagues will need adjustments to help them perform to the best of their ability – these can be changes to the built environment and furniture, the tools and technology they use in doing their job, aspects of the role, ongoing support or working arrangements.

Sadler's Wells also works collaboratively with Parents in Performing Arts (PiPA) in efforts to support parents and carers within the industry.

This is an ongoing vacancy and we aim to contact candidates on an ad-hoc basis. Once suitable candidates are appointed, this vacancy will close without further notice.

